



ERM Semi-centrifugal duct fans

- Supply of smaller air volumes at medium resistances
- Installation in DN100 - DN280 ventilation ducts
- Reduced space requirement due to compact dimensions
- IP54/IP55 protection for horizontal installations or downward airflow
- Inlet and outlet side connection couplings
- Semi-centrifugal impeller, favourable flow technology
- Intake equals outlet - simple installation

ERM Product Range

Type	Nominal Size	Rated Voltage	Air flow Volume	Degree of protection (IP)
ERM15	150mm	230V~	140m ³ /h	54
ERM18	180mm	230V~	290m ³ /h	54
ERM22	200mm	230V~	580m ³ /h	55
ERM25	250mm	230V~	850m ³ /h	55
ERM28	280mm	230V~	1020m ³ /h	55

- For commercial use: durable, powerful and robust
- For ventilation or air extraction, depending on installation direction
- can be fitted in any position
- Up to 1200m³/h.

Motor

- ERM15: shaded-pole motor, not speed controllable
- ERM18-ERM28: capacity motor, speed controllable
- Operating capacitor in terminal box ready to be connected
- Thermal overload protection as standard
- Robust motor with ball bearings, maintenance-free.

Electrical connection

- Externally fitted terminal box with cable guide bushes.

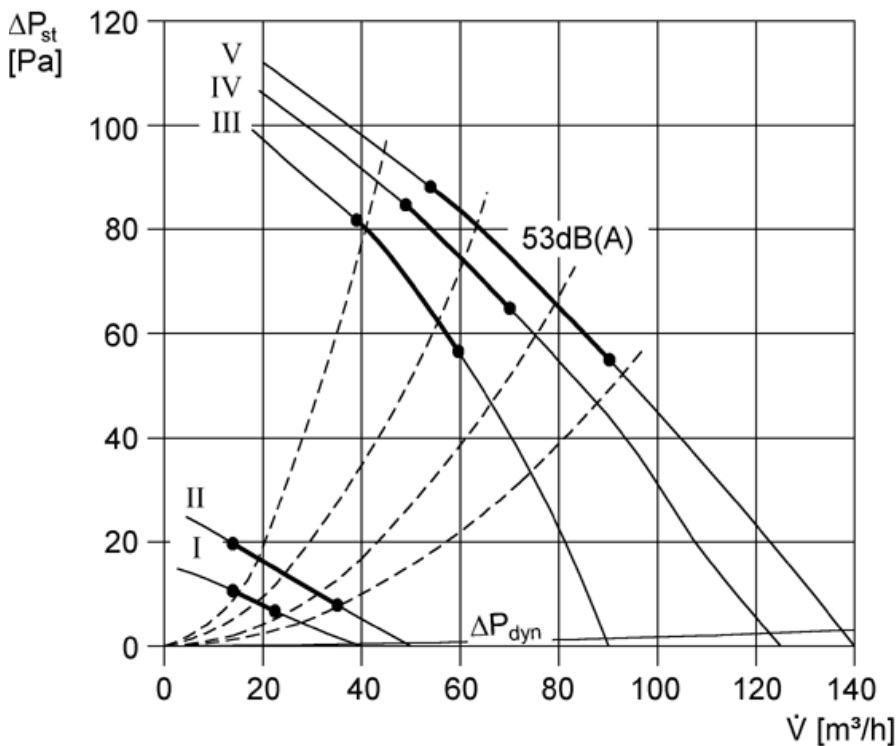
Air flow direction

- Airstream and rotational directions are indicated by arrows marked on fan housing

Application examples

- Commercial premises; canteens; air extraction systems; workshops; workplace air extraction systems

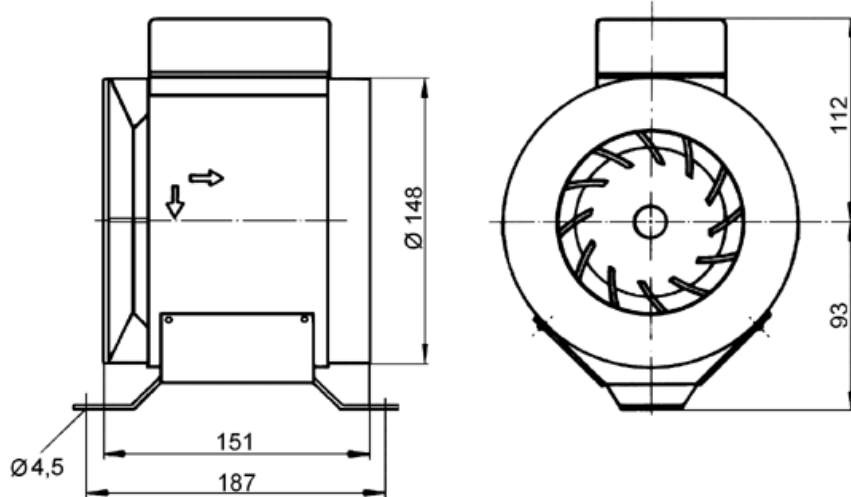
Performance Curve ERM15



Technical data

Air flow volume	140m³/h
Rotating speed	2,600 1/min
Speed controllable	Yes
Type of voltage	Alternating current
Rated voltage	230 V
Power frequency	50 Hz
Nominal output	38W
I_N	0.26A
I_{MAX}	0.26A
Degree of protection (IP)	54

Insulation class	B
Mains cable	3 x 1.5mm²
Installation position	vertical/horizontal
Housing material	synthetic shock-resistant
Colour	pearl white similar to RAL1013
Weight	1.8kg
Nominal size	150mm
Airstream temperature (nominal)	55°C
Airstream temperature at I_{MAX}	55°C
EAN	4012799802037



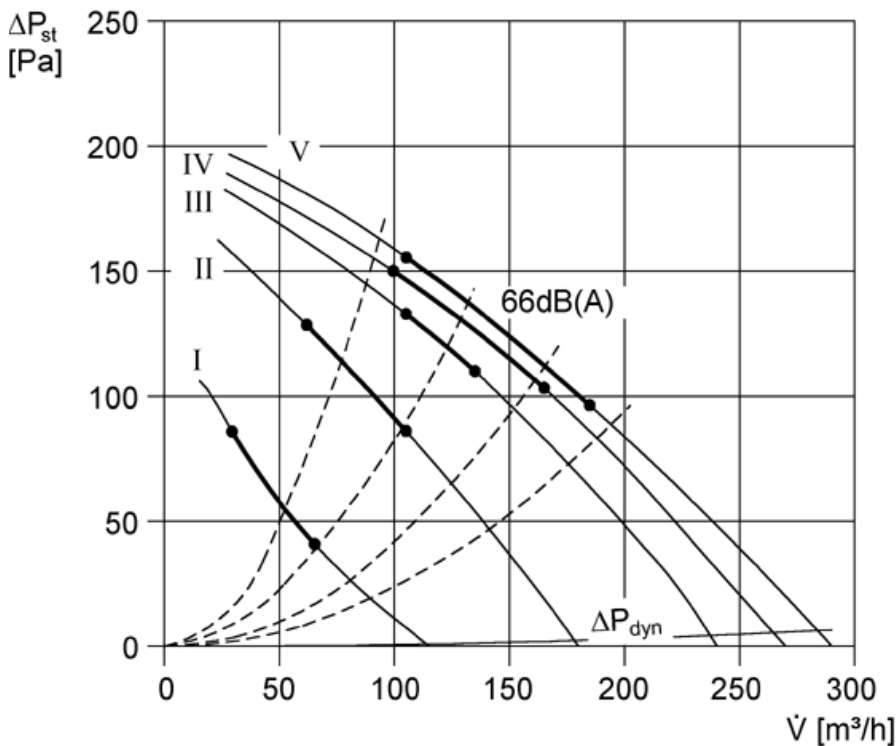
Application examples

- Commercial premises
- Canteens
- Air extraction systems
- Workshops
- Workplace air extraction systems

Accessories for ERM15

Shutter	AP 150
Automatic backflow preventer	AVM 15
Internal grilles	LGA, LGZ
Protective grille	SGM 15
Disk valves, synthetic material	TK
Disk valves, metal	TM
Disk valves, fire protection	TB, WBV
Tubular sound absorber	RSR 15
Tubular sound absorber	RSR 15/50
Heat exchanger	WT 300
Water air heater	WRH 10-1
Flexible cuff	ELM 15
Mounting foot	FUM 15/18
Air filter	TFE 15-5
Air filter	TFE 15-7
5-step transformer	TRE 0,4
5-step transformer, control cabinet	TRE 1,6 S
5-step switch for 5-step transformer	ESS 20
Step switch, reversing switch	FS 4

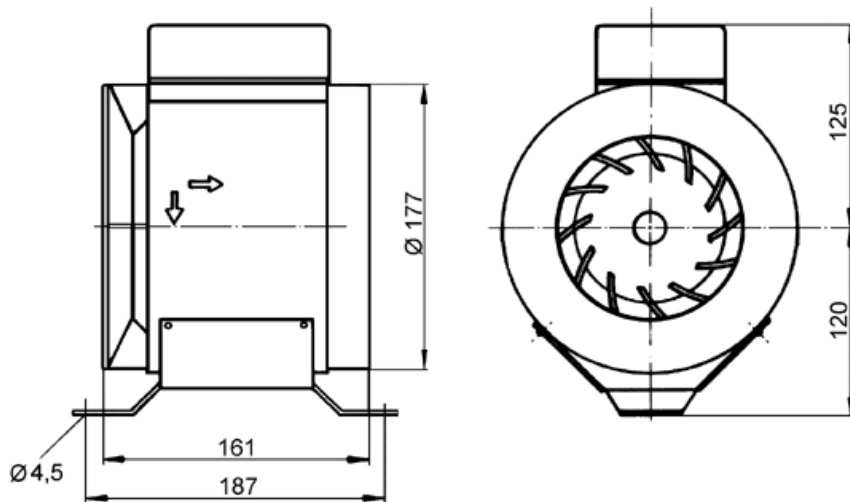
Performance Curve ERM18



Technical data

Air flow volume	290m ³ /h
Rotating speed	2,760 1/min
Speed controllable	Yes
Type of voltage	Alternating current
Rated voltage	230 V
Power frequency	50 Hz
Nominal output	50W
I_N	0.25A
I_{MAX}	0.27A
Degree of protection (IP)	54

Insulation class	B
Mains cable	3 x 1.5mm ²
Installation position	vertical/horizontal
Housing material	synthetic shock-resistant
Colour	pearl white similar to RAL1013
Weight	2.3kg
Nominal size	180mm
Airstream temperature (nominal)	55°C
Airstream temperature at I_{MAX}	55°C
EAN	4012799802518

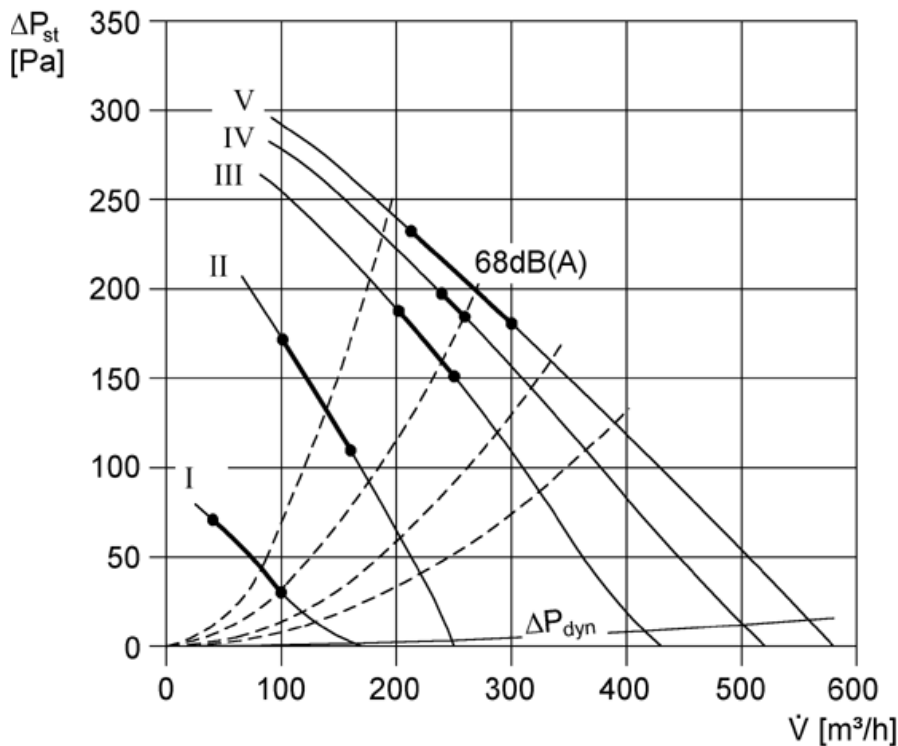


Application examples

- Commercial premises
- Canteens
- Air extraction systems
- Workshops
- Workplace air extraction systems

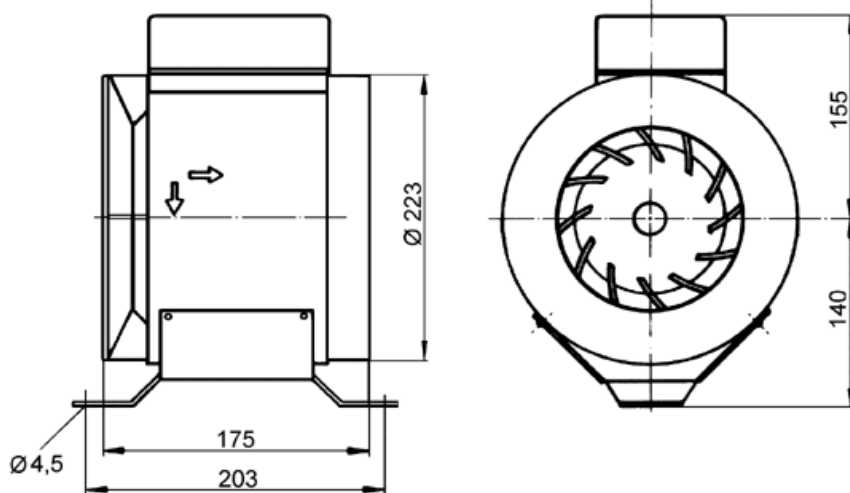
Accessories for ERM18

Shutter	AP 150
Automatic backflow preventer	AVM 18
Internal grilles	LGA, LGZ
Protective grille	SGM 18
Reducer	REM 18/14
Reducer	REM 18/12
Reducer	REM 18/10
Disk valves, synthetic material	TK
Disk valves, metal	TM
Disk valves, fire protection	TB, WBV
Tubular sound absorber	RSR 18
Tubular sound absorber	RSR 18/50
Heat exchanger	WT 300
Water air heater	WRH 12-1
Flexible cuff	ELM 18
Mounting foot	FUM 15/18
Speed controller	ST 1
Speed controller	STU 2
Speed controller distribution board	STS 2,5
5-step transformer	TRE 0,4
5-step transformer, control cabinet	TRE 1,6 S
5-step switch for 5-step transformer	ESS 20
Step switch, reversing switch	FS 4

Performance Curve ERM22

Technical data

Air flow volume	580m ³ /h
Rotating speed	2,750 1/min
Speed controllable	Yes
Type of voltage	Alternating current
Rated voltage	230 V
Power frequency	50 Hz
Nominal output	165W
I_N	0.7A
I_{MAX}	0.95A
Degree of protection (IP)	55

Insulation class	F
Mains cable	3 x 1.5mm ²
Installation position	vertical/horizontal
Housing material	synthetic shock-resistant
Colour	pearl white similar to RAL1013
Weight	5.6kg
Nominal size	200mm
Airstream temperature (nominal)	60°C
Airstream temperature at I_{MAX}	60°C
EAN	4012799802044

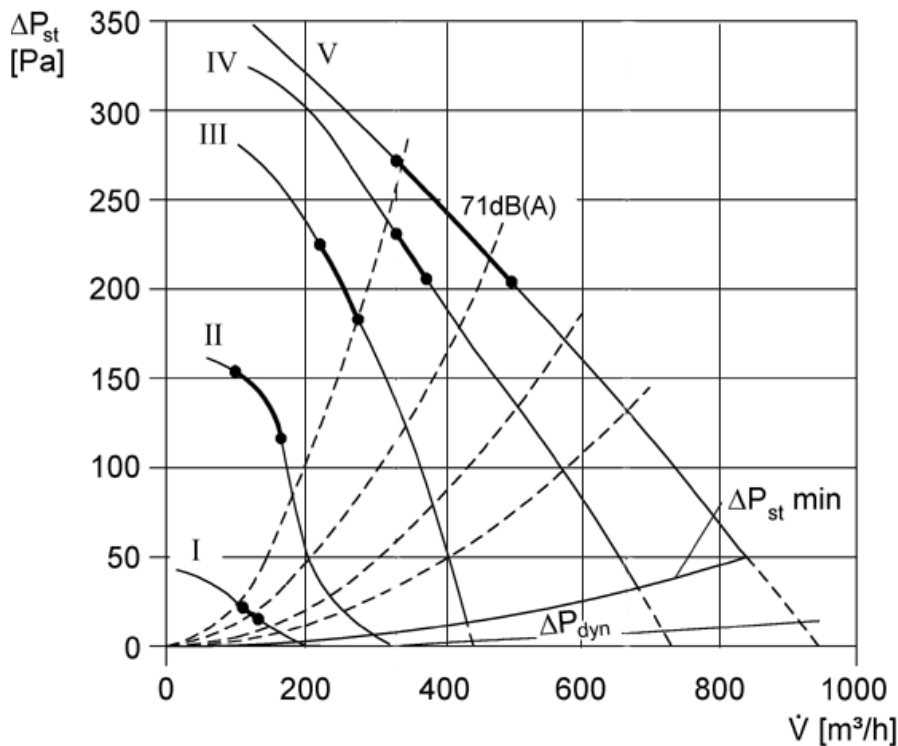

Application examples

- Commercial premises
- Canteens
- Air extraction systems
- Workshops
- Workplace air extraction systems

Accessories for ERM22

Automatic backflow preventer	AVM 20
Internal grilles	LGA, LGZ
Protective grille	SGM 22
Reducer	REM 22/18
Reducer	REM 22/15
Disk valves, synthetic material	TK
Disk valves, metal	TM
Disk valves, fire protection	TB, WBV
Tubular sound absorber	RSR 20
Tubular sound absorber	RSR 20/50
Heat exchanger	WT 750
Water air heater	WRH 20-2
Flexible cuff	ELM 20
Mounting foot	FUM 22
Air filter	TFE 20-5
Air filter	TFE 20-7
Speed controller	ST 2,5
Speed controller	STU 2,5
Speed controller distribution board	STS 2,5
5-step transformer	TRE 1,6
5-step transformer, control cabinet	TRE 1,6 S
5-step switch for 5-step transformer	ESS 20

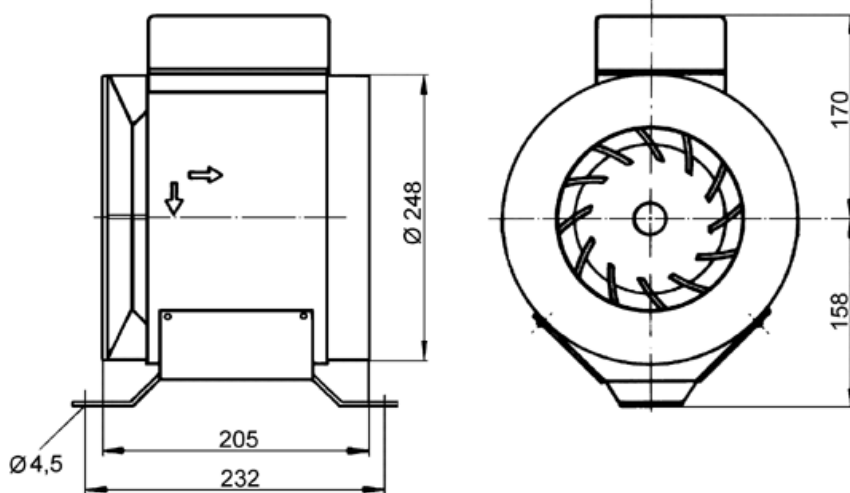
Performance Curve ERM25



Technical data

Air flow volume	850m ³ /h
Rotating speed	2,600 1/min
Speed controllable	Yes
Type of voltage	Alternating current
Rated voltage	230 V
Power frequency	50 Hz
Nominal output	207W
I_N	0.9A
I_{MAX}	1.4A
Degree of protection (IP)	55

Insulation class	F
Mains cable	3 x 1.5mm ²
Installation position	vertical/horizontal
Housing material	synthetic shock-resistant
Colour	pearl white similar to RAL1013
Weight	5.6kg
Nominal size	250mm
Airstream temperature (nominal)	80°C
Airstream temperature at I_{MAX}	40°C
EAN	4012799802051



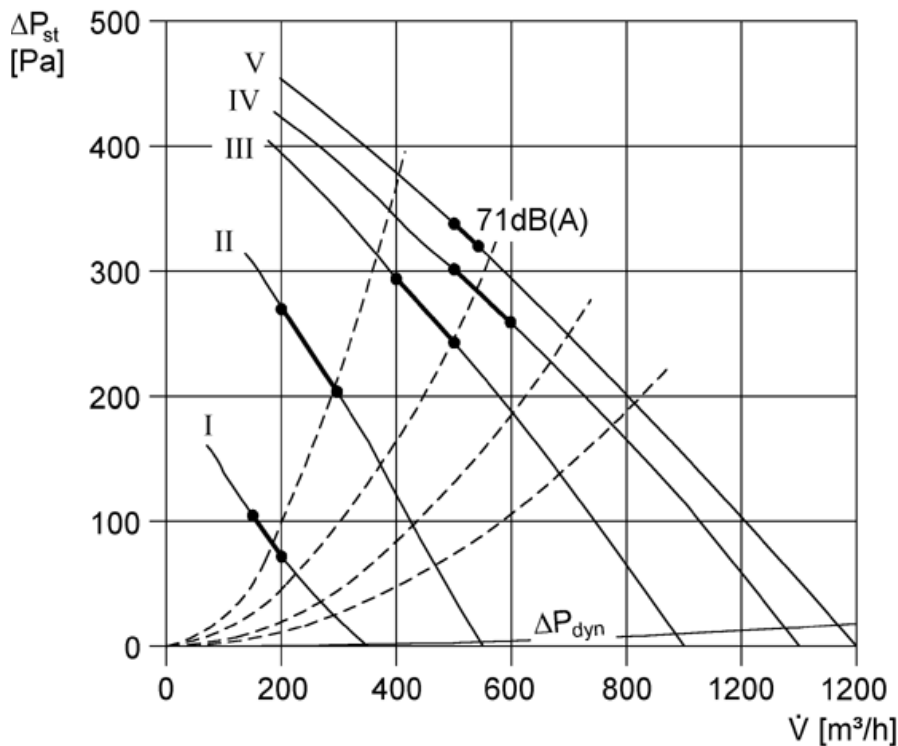
Application examples

- Commercial premises
- Canteens
- Air extraction systems
- Workshops
- Workplace air extraction systems

Accessories for ERM25

Automatic backflow preventer	AVM 25
Internal grilles	LGA, LGZ
Protective grille	SGM 25
Reducer	REM 25/20
Reducer	REM 25/18
Disk valves, synthetic material	TK
Disk valves, metal	TM
Disk valves, fire protection	TB, WBV
Tubular sound absorber	RSR 25
Tubular sound absorber	RSR 25/50
Heat exchanger	WT 750
Water air heater	WRH 25-4
Flexible cuff	ELM 25
Mounting foot	FUM 25
Air filter	TFE 25-5
Air filter	TFE 25-7
Speed controller	ST 2,5
Speed controller	STU 2,5
Speed controller distribution board	STS 2,5
5-step transformer	TRE 1,6
5-step transformer, control cabinet	TRE 1,6 S
5-step switch for 5-step transformer	ESS 20

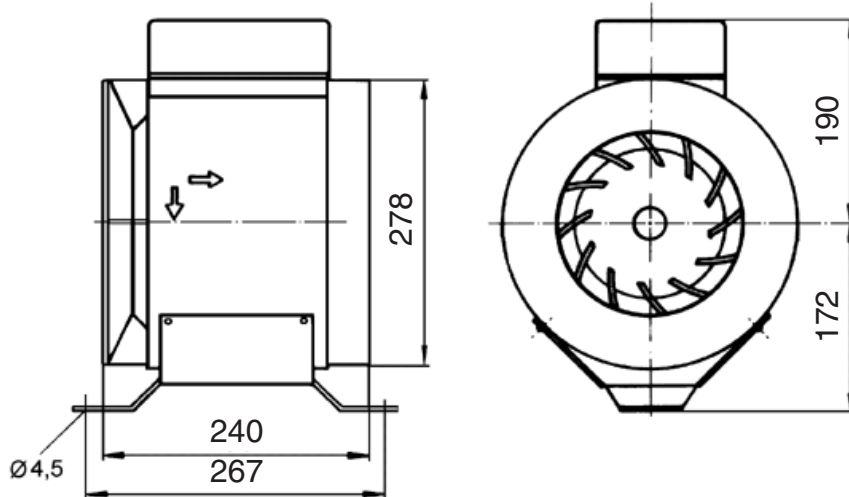
Performance Curve ERM28



Technical data

Air flow volume	1,020m ³ /h
Rotating speed	2,600 1/min
Speed controllable	Yes
Type of voltage	Alternating current
Rated voltage	230 V
Power frequency	50 Hz
Nominal output	340W
I_{MAX}	2.8A
Degree of protection (IP)	55
Insulation class	F

Mains cable	3 x 1.5mm ²
Installation position	vertical/horizontal
Housing material	synthetic shock-resistant
Colour	pearl white similar to RAL1013
Weight	10.1kg
Nominal size	280mm
Airstream temperature (nominal)	80°C
Airstream temperature at I_{MAX}	80°C
EAN	4012799802068



Application examples

- Commercial premises
- Canteens
- Air extraction systems
- Workshops
- Workplace air extraction systems

Accessories for ERM28

Automatic backflow preventer	AVM 28
Internal grilles	LGA, LGZ
Protective grille	SGM 28
Reducer	REM 28/25
Reducer	REM 28/20
Disk valves, synthetic material	TK
Disk valves, metal	TM
Disk valves, fire protection	TB, WBV
Tubular sound absorber	RSR 28
Tubular sound absorber	RSR 28/50
Heat exchanger	WT 750
Water air heater	WRH 25-4
Flexible cuff	ELM 28
Mounting foot	FUM 28
Air filter	TFE 25-5
Air filter	TFE 25-7
Speed controller	ST 5
Speed controller	STU 5
5-step transformer	TRE 3,3
5-step transformer, control cabinet	TRE 3,3 S
5-step switch for 5-step transformer	ESS 20